



GLOBALG.A.P.

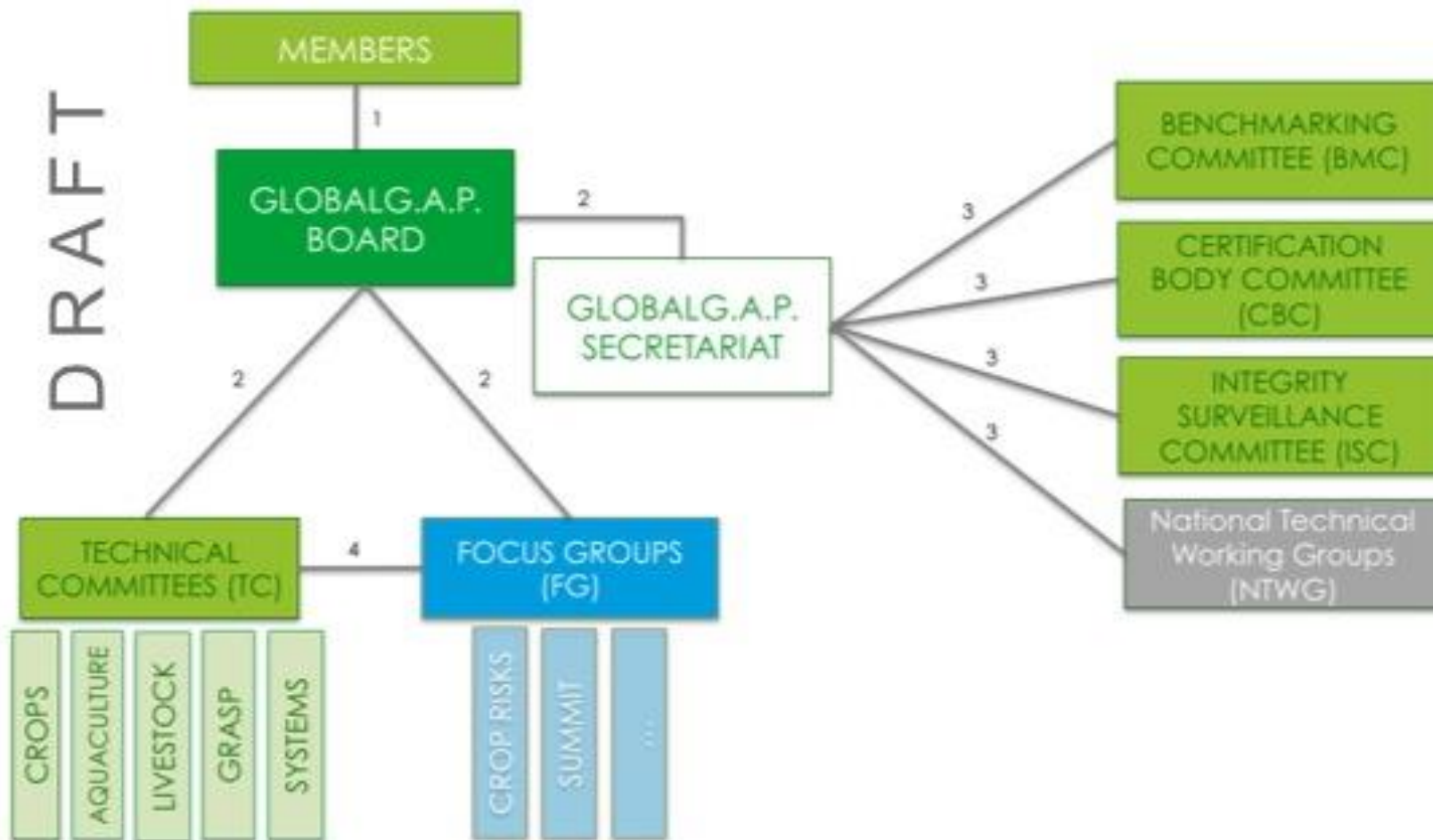
Grupo Técnico de
Trabalho Brasil (GTTB)

**National Technical
Working Groups (NTWG)**

Giampaolo Buso

**1º Fórum Global Markets
No Brasil**

GLOBALG.A.P. Committees Direction/Decision Chart



¹ The GLOBALG.A.P. Members elect the GLOBALG.A.P. Board.

² The GLOBALG.A.P. Board gives direction to the GLOBALG.A.P. Secretariat, the Technical Committees and the Focus Groups.

³ The GLOBALG.A.P. Secretariat gives direction within the framework of Board resolutions to the Benchmarking, Certification Body and Integrity Surveillance Committees and the National Technical Working Groups.

⁴ The Technical Committees give direction to Focus Groups [as outlined in the respective Focus Group Terms of Reference].



46 GRUPOS NACIONAIS DE TRABALHO TÉCNICO (NTWG)

Escopos: FV (Frutas e Vegetais), FO (Flores e Ornamentais), LS (Pecuária), AQ (Aqüicultura), TE (Chá), CC (Cereais e Oleaginosas)

AMÉRICA LATINA

País, Escopo

Argentina FV
Argentina LS
Brasil FV
Chile FV
Colômbia FV
Costa Rica FV, FO
Rep. Dominicana, FV
Equador FV, FO
Guatemala FV
Nicarágua FV, FO
Peru FV

Equipe GG

Heidi Gremminger
Heidi Gremminger
Marco Giotto
Daniel Catrón
Heidi Gremminger
Heidi Gremminger
Daniel Catrón
Flavio Alzueta
Heidi Gremminger
Daniel Catrón
Heidi Gremminger

AMÉRICA DO NORTE

País, Escopo

México FV
EUA FV

Equipe GG

Heidi Gremminger
Anita Britt

ÁSIA / OCEÂNIA

País, Escopo

China IFA
Índia FV
Japão FV, CC, TE
Paquistão IFA
Coréia do Sul FV, TE, AQ
Tailândia FV
Tailândia AQ
Vietnã AQ

Equipe GG

Zhou Xin
Kerstin Uhlig
Ignacio Antequera
Kerstin Uhlig
Flavio Alzueta
Kerstin Uhlig
Valeska Weymann
Valeska Weymann

Nova Zelândia FV Anita Britt



GLOBALG.A.P.

NICARAGUA INTERPRETATION GUIDELINE
INTEGRATED FARM ASSURANCE | CPCC
ALL FARM

IFA Version: 4.0
Section: All Farm
Page: 8 of 161

National Interpretation of Integrated Farm Control Points and C

MODUL ALL FARM | CROPS BASE | F

Based on
All Farm - IFA V4
Crops Base – IFA V4
Fruit and Vegetables –

Valid from: 7
Mandatory from: 7

Nº	Control Point (CP)	Compliance Criteria (CC)	Level	Country-specific interpretation of the Compliance Criteria by NTWG	
				ENGLISH	SPANISH
				CC	CC
AF. 1.1.1	Is a reference system for each field, orchard, greenhouse, yard, plot, livestock building/pen, and/or other area/location used in production established and referenced on a farm plan or map?	Compliance must include visual identification in the form of a physical sign at each field/orchard, greenhouse/yard/plot/livestock building/pen or other farm area/location, or a farm plan or map that could be cross-referenced to the identification system. No N/A.	Minor Must	Compliance must include visual identification in the form of a physical sign at each field, sector, greenhouse, yard, plot, barn, pen, building, enclosure, pond, production unit, or other farm area, etc., or a farm plan, sketch, or map that can be cross-referenced to the identification system. No N/A.	El cumplimiento debe incluir una identificación visual en la forma de una señal física en cada campo, sector, invernadero, parcela, lote, establo, corral, edificio, recinto, estanque, unidad de producción, u otra área en la explotación, etc., que se pueda usar como referencia para el sistema de identificación en un plano, croquis o mapa del establecimiento. Sin opción de N/A.
AF. 1.1.2	Is a recording system established for each unit of production or other area/location to provide a record of the livestock/aquaculture production and/or agronomic activities undertaken at those locations?	Current records must provide a history of GLOBALG.A.P. production of all production areas. No N/A.	Major Must		



NATIONAL TECHNICAL WORKING GROUPS EXTRANET

- MAIN
- NTWG GROUPS
- NIG STATUS
- MEMBERS
- EVENTS
- FORUM
- CHAT
- INVITE
- PHOTOS
- MY NETWORK

COMMITTEES

Sign Out

Inbox

Friends – Invite

Settings

All Groups My Groups

+ Add

All Groups (14)



Sort by: Most Active

The NTWG Extranet is a new platform exclusively for NTWG members who can exchange/share information, upload documents and chat with peers.

LATEST ACTIVITY



What are you up to?

140 Share +



Committees posted a status

"Dear Chile NTWG members! Thanks for signing up to the Extranet. To join the Chile NTWG group, please click on "you have 1 group invite"."

Tuesday

0 0



Marcela Iturrieta Astudillo and Patricia Villanueva joined GLOBALG.A.P. NTWG



NTWG BRASIL - FRUTAS E VERDURAS

4 members
Latest Activity: May 8



ASIAN AND OCEANIAN NTWGs

2 members
Latest Activity: Apr 19

This group is for Asian and NZ NTWG members to share experiences and exchange and share information. there is also a chat...



NTWG Brazil - LIVESTOCK BASE and FEED

3 members
Latest Activity: Aug 8
NTWG for Livestock and Feed, Brazil



NTWG Japan

3 members
Latest Activity: Sep 28



LATIN AMERICAN NTWGs

6 members
Latest Activity: Sep 25
This group is for Latin American NTWG members to share experiences and exchange and share information. There is also a chat function.



AFRICAN NTWGs

3 members
Latest Activity: Apr 20
This group is for African NTWG members to share experiences and exchange and share information. There is also a chat function.

